

November 2020



Inspiration Palettes

ShawContract®

 **MAJESTIC ASSET MANAGEMENT, INC.**

Down Town The District

Standard

Color Scheme 1



November 2020

Down Town | The District

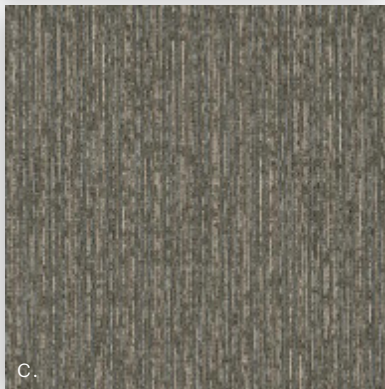
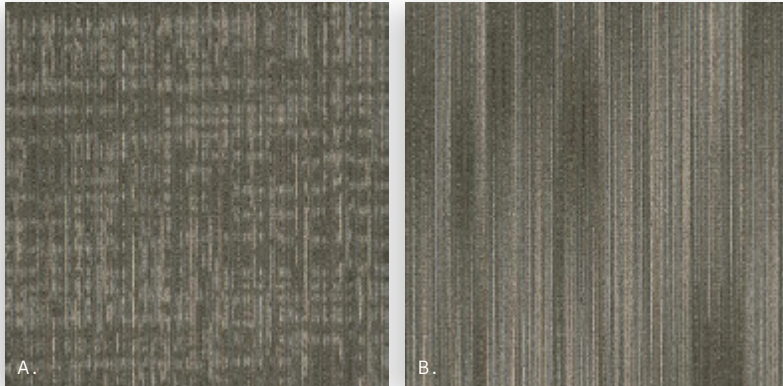
LVT: TERRAIN II 0454V | ECHO 00775 CARPET TILE: INTENT 5T208 | SKYLIGHT 08530 INSERT: PURPOSE 5T209 | SKYLIGHT 08530

Down Town The District

Standard

Color Scheme 1

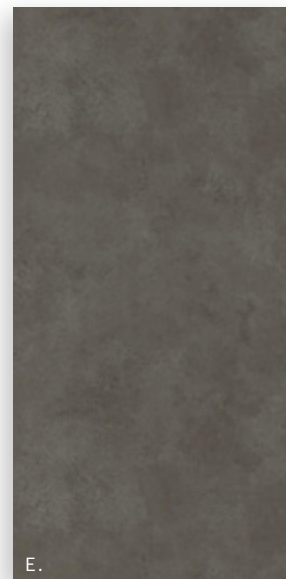
CARPET TILE 24" X 24"



LVT 6" X 48"



LVT 18" X 36"



- A. **INTENT 5T208** | SKYLIGHT 08530
- B. **SITUATION 5T210** | SKYLIGHT 08530
- C. **PURPOSE 5T209** | SKYLIGHT 08530
- D. **TERRAIN II 20 MIL 0454V** | ECHO 00775
- E. **SURFACE 0515V** | SEDIMENT 15595
- F. **4" WALL BASE 148VS** | STERLING 00120
- G. **SW6259 SPATIAL WHITE** (PRIMARY)
- H. **SW6255 MORNING FOG** (LIGHT ACCENT)
- I. **SW6256 SERIOUS GRAY** (DARK ACCENT)

WALL BASE 4"



PAINT (SHERWIN WILLIAMS INT/EXT)



November 2020

Down Town | The District

Down Town The District

Standard

Color Scheme 2



November 2020

Down Town | The District

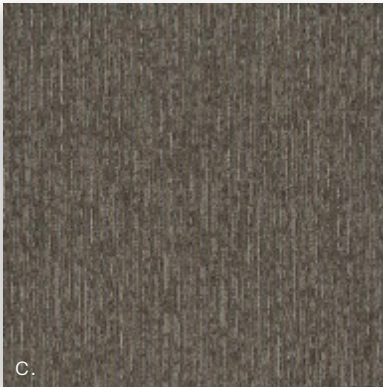
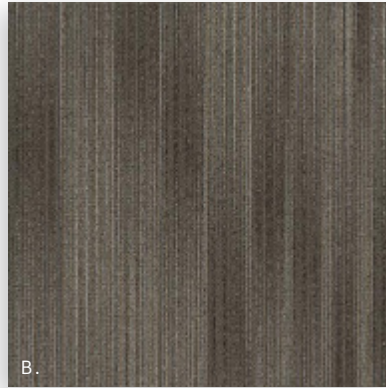
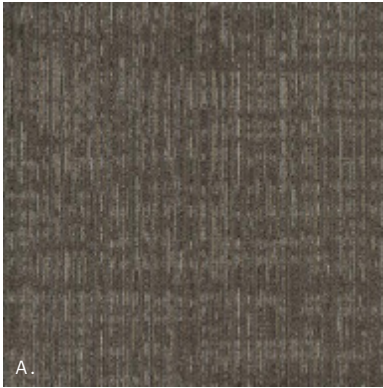
LVT: TERRAIN II 0454V | SHADE 00564 **CARPET TILE:** SITUATION 5T210 | WOODSMOKE 08760 **INSERT:** PURPOSE 5T209 | WOODSMOKE 08760

Down Town The District

Standard

Color Scheme 2

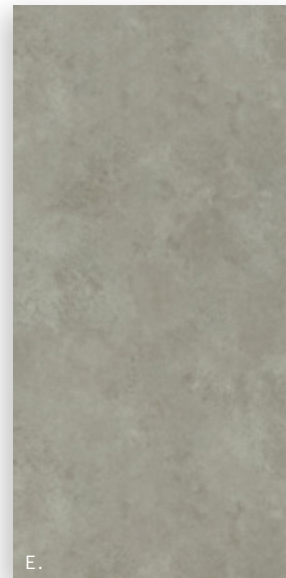
CARPET TILE 24" X 24"



LVT 6" X 48"

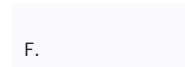


LVT 18" X 36"

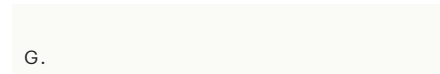


- A. **INTENT 5T208** | WOODSMOKE 08760
- B. **SITUATION 5T210** | WOODSMOKE 08760
- C. **PURPOSE 5T209** | WOODSMOKE 08760
- D. **TERRAIN II 20 MIL 0454V** | SHADE 00564
- E. **SURFACE 0515V** | NATURAL 15155
- F. **4" WALL BASE 148VS** | WHITE 00100
- G. **SW7757 HR WHITE** (PRIMARY)
- H. **SW6072 VERSATILE GRAY** (LIGHT ACCENT)
- I. **SW6074 SPALDING GRAY** (DARK ACCENT)

WALL BASE 4"



PAINT (SHERWIN WILLIAMS INT/EXT)



November 2020

Down Town | The District

Down Town The District

Standard

Color Scheme 3



November 2020

Down Town | The District

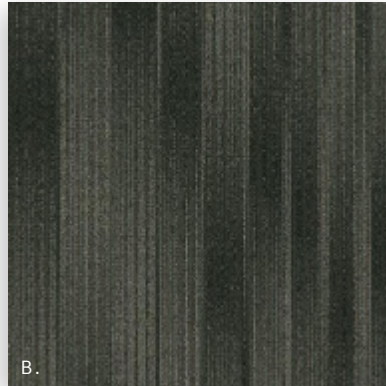
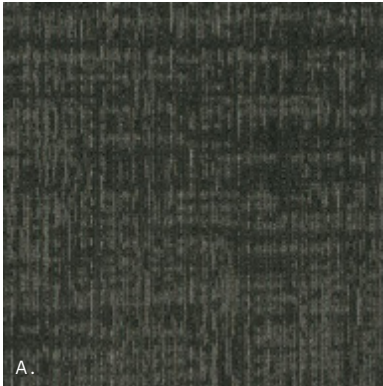
LVT: SURFACE 0515V | CEMENT 15518 **CARPET TILE:** PURPOSE 5T209 | SHALE 08597 **INSERT:** INTENT 5T208 | SHALE 08597

Down Town The District

Standard

Color Scheme 3

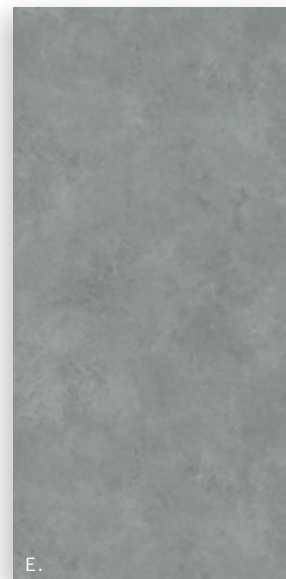
CARPET TILE 24" X 24"



LVT 6" X 48"

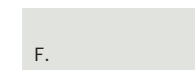


LVT 18" X 36"



- A. **INTENT 5T208** | SHALE 08597
- B. **SITUATION 5T210** | SHALE 08597
- C. **PURPOSE 5T209** | SHALE 08597
- D. **TERRAIN II 20 MIL 0454V** | LODGE 00740
- E. **SURFACE 0515V** | CEMENT 15518
- F. **4" WALL BASE 148VS** | STERLING 00120
- G. **SW6259 SPATIAL WHITE** (PRIMARY)
- H. **SW6232 MISTY** (LIGHT ACCENT)
- I. **SW7074 SOFTWARE** (DARK ACCENT)

WALL BASE 4"



PAINT (SHERWIN WILLIAMS INT/EXT)



November 2020

Down Town | The District

Down Town In Sync

Standard

Color Scheme 1



November 2020

Down Town | In Sync

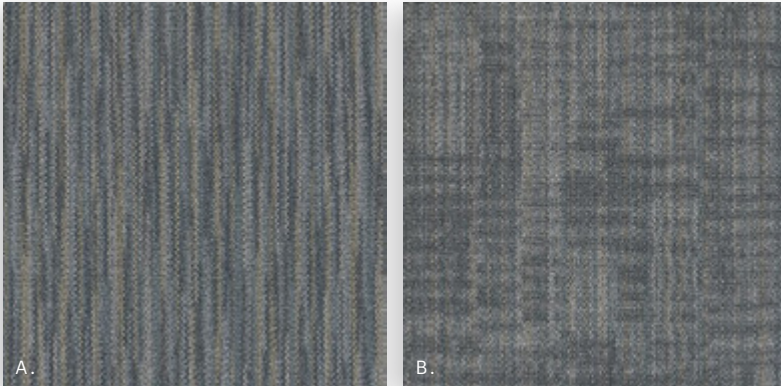
LVT: TERRAIN II 0454V | ECHO 00775 **CARPET TILE:** CORRESPOND 5T353 | FUSE 52515 **INSERT:** COMPANION 5T352 | FUSE 52515

Down Town In Sync

Standard

Color Scheme 1

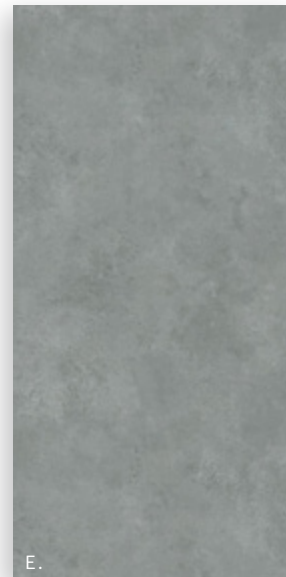
CARPET TILE 24" X 24"



LVT 6" X 48"



LVT 18" X 36"



- A. **COMPANION 5T352** | FUSE 52515
- B. **CORRESPOND 5T353** | FUSE 52515
- C. **PARTNER 5T354** | FUSE 52515
- D. **TERRAIN II 20 MIL 0454V** | ECHO 00775
- E. **SURFACE 0515V** | CEMENT 15518
- F. **4" WALL BASE 148VS** | STERLING 00120
- G. **SW6259 SPATIAL WHITE** (PRIMARY)
- H. **SW6255 MORNING FOG** (LIGHT ACCENT)
- I. **SW6256 SERIOUS GRAY** (DARK ACCENT)

WALL BASE 4"



PAINT (SHERWIN WILLIAMS INT/EXT)



November 2020

Down Town | In Sync

Down Town In Sync

Standard

Color Scheme 2



November 2020

Down Town | In Sync

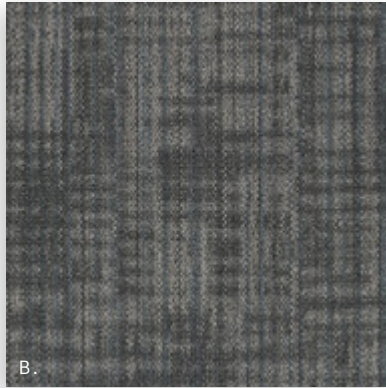
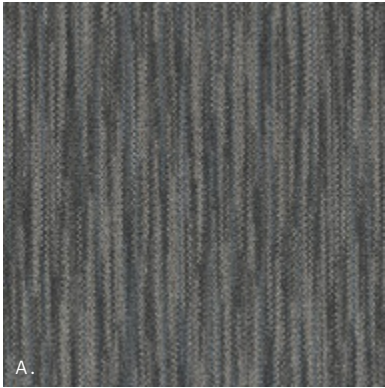
LVT: SURFACE 0515V | NATURAL 15155 CARPET TILE: COMPANION 5T352 | ALIKE 52557 INSERT: CORRESPOND 5T353 | ALIKE 52557

Down Town In Sync

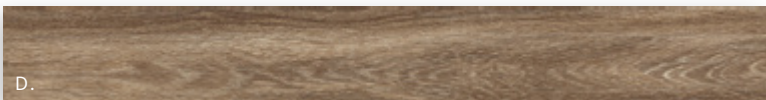
Standard

Color Scheme 2

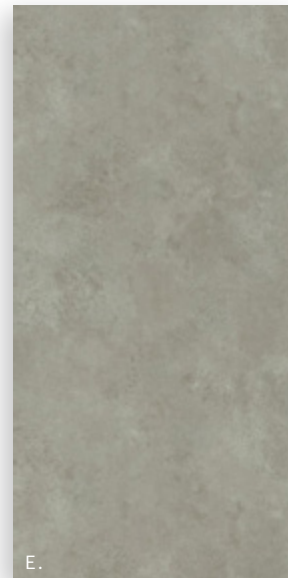
CARPET TILE 24" X 24"



LVT 6" X 48"

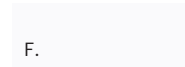


LVT 18" X 36"

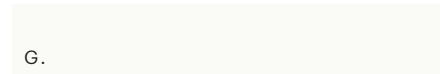


- A. **COMPANION 5T352** | ALIKE 52557
- B. **CORRESPOND 5T353** | ALIKE 52557
- C. **PARTNER 5T354** | ALIKE 52557
- D. **TERRAIN II 20 MIL 0454V** | NEST 00774
- E. **SURFACE 0515V** | NATURAL 15155
- F. **4" WALL BASE 148VS** | WHITE 00100
- G. **SW7757 HR WHITE** (PRIMARY)
- H. **SW6072 VERSATILE GRAY** (LIGHT ACCENT)
- I. **SW6074 SPALDING GRAY** (DARK ACCENT)

WALL BASE 4"



PAINT (SHERWIN WILLIAMS INT/EXT)



November 2020

Down Town | In Sync

Down Town In Sync

Standard

Color Scheme 3



November 2020

Down Town | In Sync

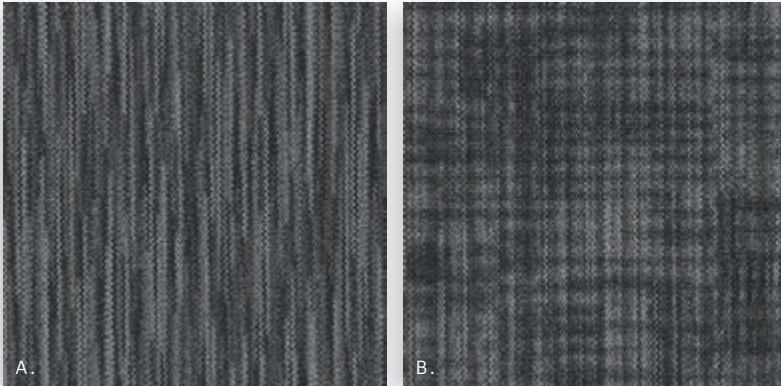
LVT: SURFACE 0515V | QUARTZ 15515 **CARPET TILE:** PARTNER 5T354 | DUO 52597 **INSERT:** CORRESPOND 5T353 | DUO 52597

Down Town In Sync

Standard

Color Scheme 3

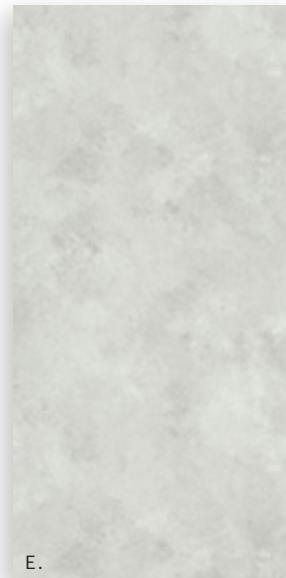
CARPET TILE 24" X 24"



LVT 6" X 48"



LVT 18" X 36"



- A. **COMPANION 5T352** | DUO 52597
- B. **CORRESPOND 5T353** | DUO 52597
- C. **PARTNER 5T354** | DUO 52597
- D. **TERRAIN II 20 MIL 0454V** | LODGE 00740
- E. **SURFACE 0515V** | QUARTZ 15515
- F. **4" WALL BASE 148VS** | STERLING 00120
- G. **SW6259 SPATIAL WHITE** (PRIMARY)
- H. **SW6232 MISTY** (LIGHT ACCENT)
- I. **SW7074 SOFTWARE** (DARK ACCENT)

WALL BASE 4"



PAINT (SHERWIN WILLIAMS INT/EXT)



November 2020

Down Town | In Sync

Down Town

Simply by Nature

Color Scheme 1



November 2020

Down Town | Simply by Nature

LVT: SURFACE 0515V | CEMENT 15518 **CARPET TILE:** ARRANGE 5T294 | METALLIC BEIGE 94760 **INSERT:** ARRANGE 5T294 | GOLDEN GATE 94668

Down Town

Simply by Nature

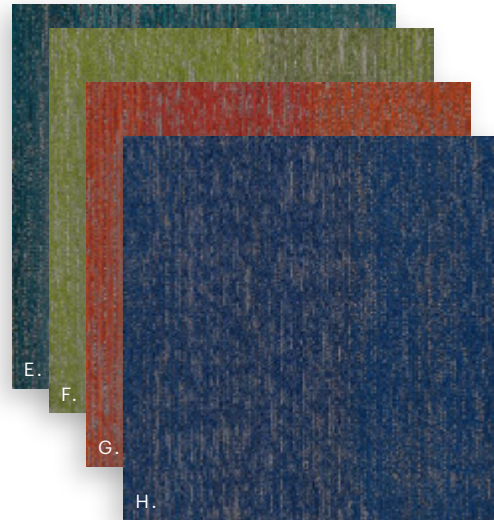
Standard

Color Scheme 1

CARPET TILE 24" X 24"

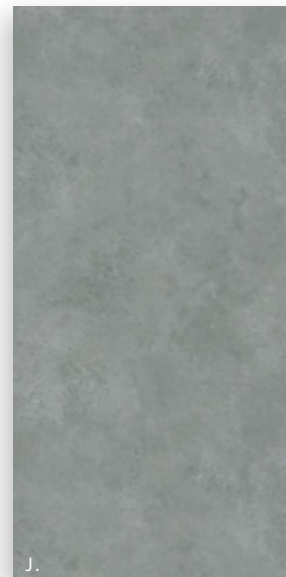


ACCENT CARPET TILE 24" X 24"



- A. **ARRANGE 5T294** | METALLIC BEIGE 94760
- B. **ARRAY 5T295** | METALLIC BEIGE 94760
- C. **OFFSET 5T296** | METALLIC BEIGE 94760
- D. **STRUCTURE 5T297** | METALLIC BEIGE 94760
- E. **ARRANGE 5T294** | REFLECTION 94323
- F. **ARRANGE 5T294** | MOUNTAIN VIEW 94326
- G. **ARRANGE 5T294** | GOLDEN GATE 94668
- H. **ARRANGE 5T294** | BLUE BELLE 94486
- I. **TERRAIN II 20 MIL 0454V** | ECHO 00775
- J. **SURFACE 0515V** | CEMENT 15518
- K. **4" WALL BASE 148VS** | STERLING 00120
- L. **SW6259 SPATIAL WHITE** (PRIMARY)
- M. **SW6255 MORNING FOG** (LIGHT ACCENT)
- N. **SW6256 SERIOUS GRAY** (DARK ACCENT)
- O. **SW6719 GECKO** (BRIGHT ACCENT)

LVT 18" X 36"



LVT 6" X 48"



WALL BASE 4"



PAINT (SHERWIN WILLIAMS INT/EXT)



November 2020

Down Town | Simply by Nature

Down Town

Simply by Nature

Color Scheme 2



November 2020

Down Town | Simply by Nature

LVT: TERRAIN II 0454V | NEST 00774 **CARPET TILE:** STRUCTURE 5T297 | MIRROR GREY 94535 **INSERT:** OFFSET 5T296 | MIRROR GREY 94535

Down Town

Simply by Nature

Standard

Color Scheme 2

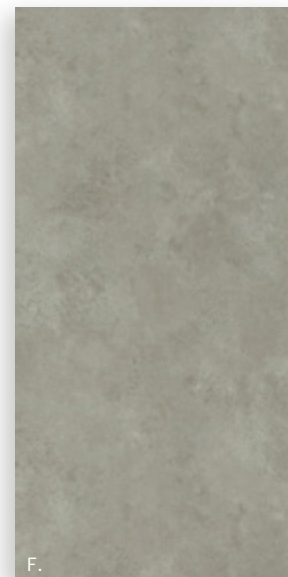
CARPET TILE 24" X 24"



LVT 6" X 48"

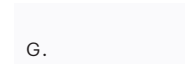


LVT 18" X 36"

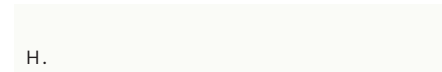


- A. **ARRANGE 5T294** | MIRROR GREY 94535
- B. **ARRAY 5T295** | MIRROR GREY 94535
- C. **OFFSET 5T296** | MIRROR GREY 94535
- D. **STRUCTURE 5T297** | MIRROR GREY 94535
- E. **TERRAIN II 20 MIL 0454V** | NEST 00774
- F. **SURFACE 0515V** | NATURAL 15155
- G. **4" WALL BASE 148VS** | WHITE 00100
- H. **SW7757 HR WHITE** (PRIMARY)
- I. **SW6072 VERSATILE GRAY** (LIGHT ACCENT)
- J. **SW6074 SPALDING GRAY** (DARK ACCENT)
- K. **SW6615 RED/ORANGE** (BRIGHT ACCENT)

WALL BASE 4"



PAINT (SHERWIN WILLIAMS INT/EXT)



November 2020

Down Town | Simply by Nature

Down Town

Simply by Nature

Color Scheme 3



November 2020

Down Town | Simply by Nature

LVT: TERRAIN II 0454V | LODGE 00740 **CARPET TILE:** OFFSET 5T296 | POLISHED STONE 94557 **INSERT:** ARRAY 5T295 | POLISHED STONE 94557

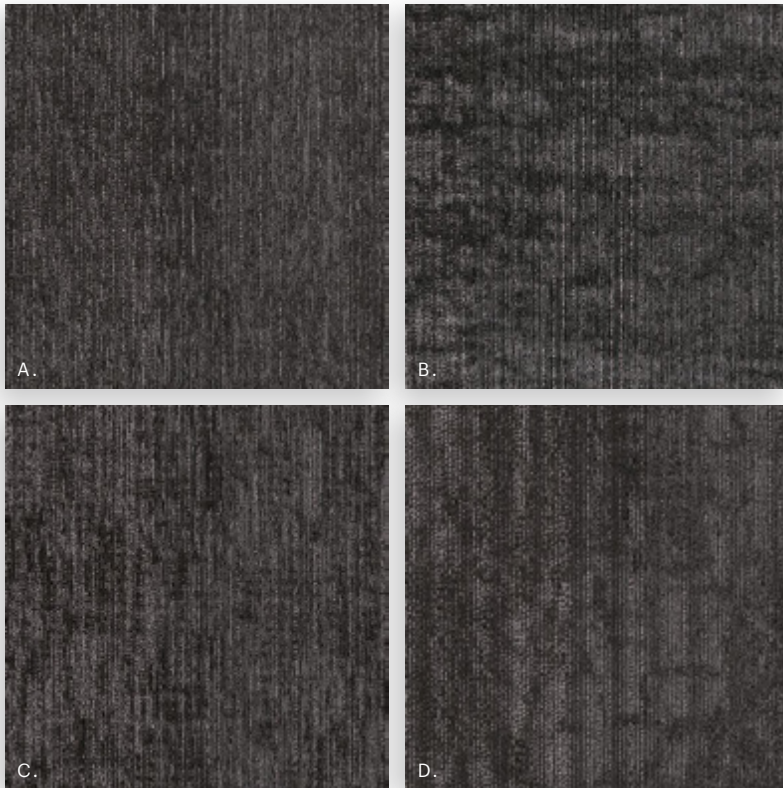
Down Town

Simply by Nature

Standard

Color Scheme 3

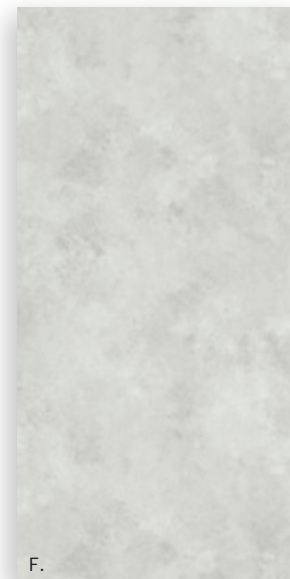
CARPET TILE 24" X 24"



LVT 6" X 48"

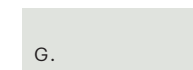


LVT 18" X 36"



- A. **ARRANGE 5T294** | POLISHED STONE 94557
- B. **ARRAY 5T295** | POLISHED STONE 94557
- C. **OFFSET 5T296** | POLISHED STONE 94557
- D. **STRUCTURE 5T297** | POLISHED STONE 94557
- E. **TERRAIN II 20 MIL 0454V** | LODGE 00740
- F. **SURFACE 0515V** | QUARTZ 15515
- G. **4" WALL BASE 148VS** | STERLING 00120
- H. **SW6259 SPATIAL WHITE** (PRIMARY)
- I. **SW6232 MISTY** (LIGHT ACCENT)
- J. **SW7074 SOFTWARE** (DARK ACCENT)
- K. **SW6775 BRINY** (BRIGHT ACCENT)
- L. **SW6510 LOYAL BLUE** (BRIGHT ACCENT)

WALL BASE 4"



PAINT (SHERWIN WILLIAMS INT/EXT)



November 2020

Down Town | Simply by Nature

City Lights Places

Optional Upgrade 1

Color Scheme 1



November 2020

City Lights | Places

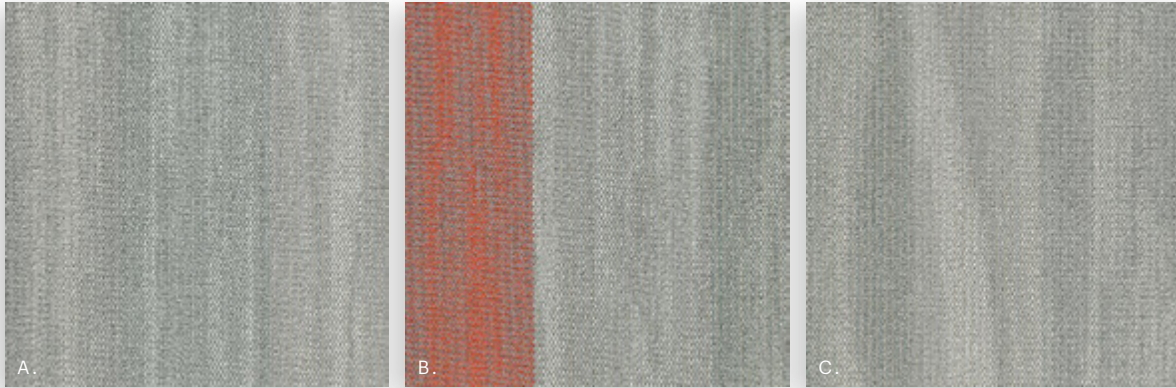
LVT: JOY SQUARED 0993V | HOLIDAY 93500 **CARPET TILE:** SEA 5T172 | OCEAN 72535 **INSERT:** SEA EDGE 5T173 | OCEAN CORAL 72536

City Lights Places

Optional Upgrade 1

Color Scheme 1

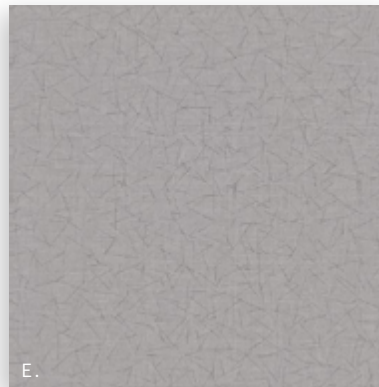
CARPET TILE 24" X 24" ADD \$.33 / SQ FT



LVT 6" X 48"



LVT 24" X 24" ADD \$.10 / SQ FT



- A. **SEA 5T172** | OCEAN 72535
- B. **SEA EDGE 5T173** | OCEAN CORAL 72536
- C. **SKY 5T174** | OCEAN 72535
- D. **TERRAIN II 20 MIL 0454V** | ECHO 00775
- E. **JOY SQUARED 0993V** | HOLIDAY 93500
- F. **4" WALL BASE 148VS** | STERLING 00120
- G. **SW6259 SPATIAL WHITE** (PRIMARY)
- H. **SW6255 MORNING FOG** (LIGHT ACCENT)
- I. **SW6256 SERIOUS GRAY** (DARK ACCENT)
- J. **SW6615 PEPPERY** (BRIGHT ACCENT)

WALL BASE 4"



PAINT (SHERWIN WILLIAMS INT/EXT)



November 2020

City Lights | Places

City Lights Places

Optional Upgrade 1

Color Scheme 2



November 2020

City Lights | Places

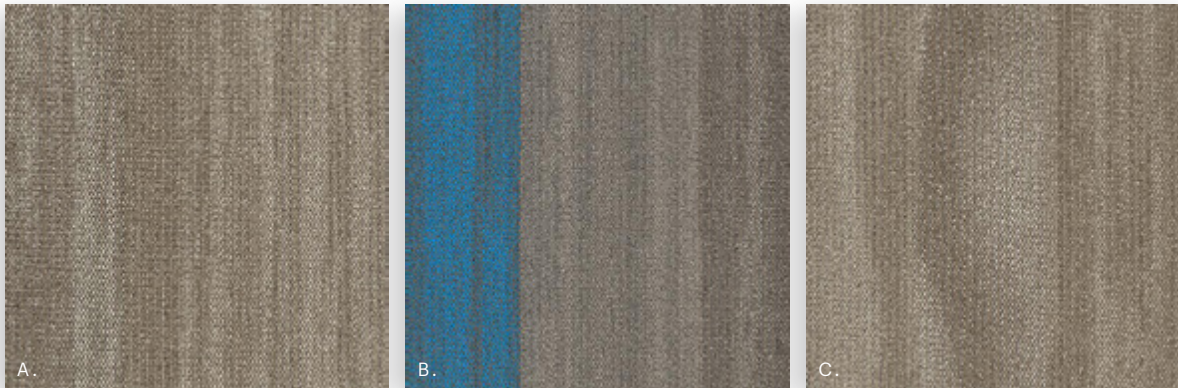
LVT: TERRAIN II 0454V | TIMBER 00572 **CARPET TILE:** SEA 5T172 | EARTHY 72761

City Lights Places

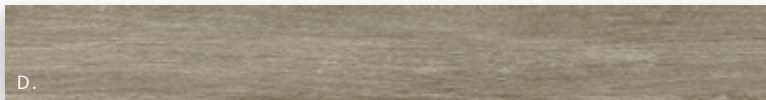
Optional Upgrade 1

Color Scheme 2

CARPET TILE 24" X 24" ADD \$.33 / SQ FT



LVT 6" X 48"

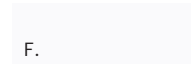


LVT 24" X 24" ADD \$.10 / SQ FT

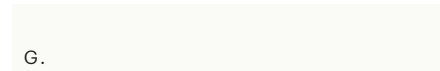


- A. **SEA 5T172** | EARTHY 72761
- B. **SEA EDGE 5T173** | VILLAGE AZURE 72759
- C. **SKY 5T174** | EARTHY 72761
- D. **TERRAIN II 20 MIL 0454V** | TIMBER 00572
- E. **JOY SQUARED 0993V** | SNOW DAY 93100
- F. **4" WALL BASE 148VS** | WHITE 00100
- G. **SW7757 HR WHITE** (PRIMARY)
- H. **SW6072 VERSATILE GRAY** (LIGHT ACCENT)
- I. **SW6074 SPALDING GRAY** (DARK ACCENT)
- J. **SW6789 BLUE MOSQUE** (BRIGHT ACCENT)

WALL BASE 4"



PAINT (SHERWIN WILLIAMS INT/EXT)



November 2020

City Lights | Places

City Lights Places

Optional Upgrade 1

Color Scheme 3



November 2020

City Lights | Places

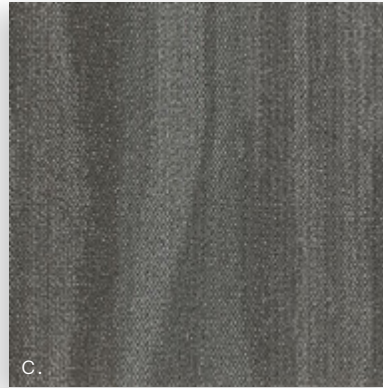
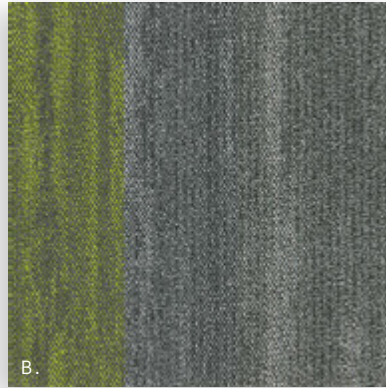
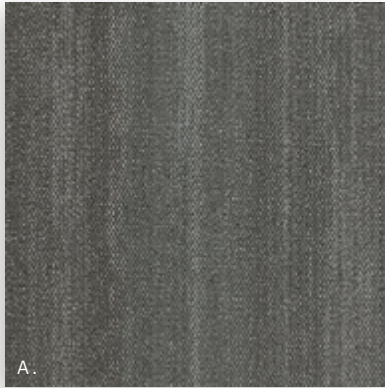
LVT: TERRAIN II 0454V | SHADE 00564 CARPET TILE: SKY 5T174 | URBAN 72557

City Lights Places

Optional Upgrade 1

Color Scheme 3

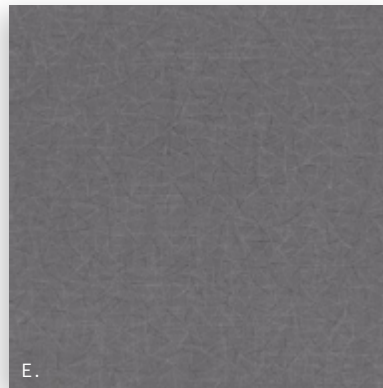
CARPET TILE 24" X 24" ADD \$.33 / SQ FT



LVT 6" X 48"



LVT 24" X 24" ADD \$.10 / SQ FT



- A. **SEA 5T172** | URBAN 72557
- B. **SEA EDGE 5T173** | ADVENTURE GREEN 72482
- C. **SKY 5T174** | URBAN 72557
- D. **TERRAIN II 20 MIL 0454V** | SHADE 00564
- E. **JOY SQUARED 0993V** | BICYCLE 93560
- F. **4" WALL BASE 148VS** | STERLING 00120
- G. **SW6259 SPATIAL WHITE** (PRIMARY)
- H. **SW6232 MISTY** (LIGHT ACCENT)
- I. **SW7074 SOFTWARE** (DARK ACCENT)
- J. **SW6719 GECKO** (BRIGHT ACCENT)

WALL BASE 4"



PAINT (SHERWIN WILLIAMS INT/EXT)



November 2020

City Lights | Places

City Lights Places

Optional Upgrade 1

Color Scheme 4



November 2020

City Lights | Places

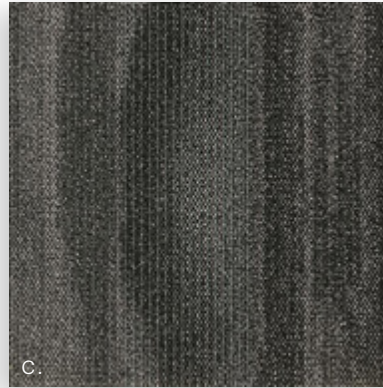
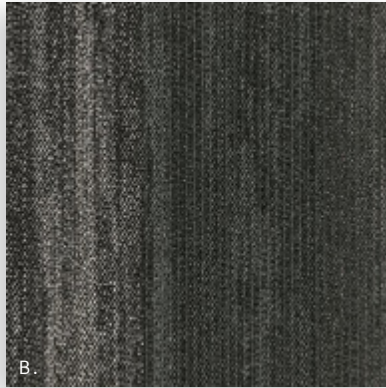
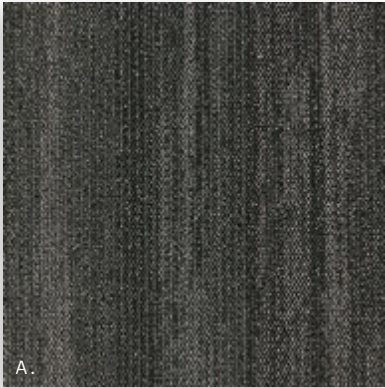
LVT: JOY SQUARED 0993V | FIREFLY 93595 CARPET TILE: SEA EDGE 5T173 | SKYLINE SILVER 72503

City Lights Places

Optional Upgrade 1

Color Scheme 4

CARPET TILE 24" X 24" ADD \$.33 / SQ FT



LVT 6" X 48"



LVT 24" X 24" ADD \$.10 / SQ FT



- A. **SEA 5T172** | SKYLINE 72500
- B. **SEA EDGE 5T173** | SKYLINE SILVER 72503
- C. **SKY 5T174** | SKYLINE 72500
- D. **TERRAIN II 20 MIL 0454V** | LARK 05016
- E. **JOY SQUARED 0993V** | FIREFLY 93595
- F. **4" WALL BASE 148VS** | STERLING 00120
- G. **SW6259 SPATIAL WHITE** (PRIMARY)
- H. **SW6232 MISTY** (LIGHT ACCENT)
- I. **SW7074 SOFTWARE** (DARK ACCENT)
- J. **SW6719 GECKO** (BRIGHT ACCENT)

WALL BASE 4"



PAINT (SHERWIN WILLIAMS INT/EXT)



November 2020

City Lights | Places

City Lights Kindred

Optional Upgrade 1

Color Scheme 1



November 2020

City Lights | Kindred

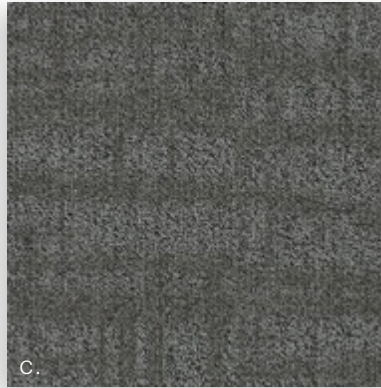
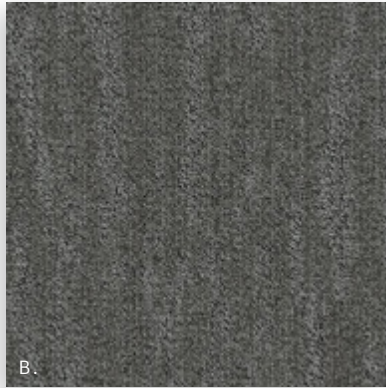
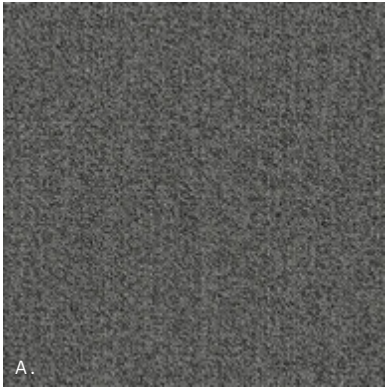
LVT: COMPOUND 2.5MM 4074V | ELEVATE 77518 **CARPET TILE:** MEMORY 5T263 | PONDER 48530 **INSERT:** BELONG 5T261 | PONDER 48530

City Lights Kindred

Optional Upgrade 1

Color Scheme 1

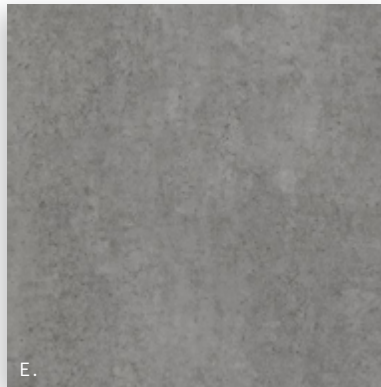
CARPET TILE 24" X 24" ADD \$.39 / SQ FT



LVT 7" X 48"



LVT 24" X 24"



- A. **BELONG 5T261** | PONDER 48530
- B. **DREAM 5T265** | PONDER 48530
- C. **MEMORY 5T263** | PONDER 48530
- D. **GRAIN 0502V** | RUSSET 64760
- E. **COMPOUND 2.5MM 4074V** | ELEVATE 77518
- F. **4" WALL BASE 148VS** | STERLING 00120
- G. **SW6259 SPATIAL WHITE** (PRIMARY)
- H. **SW6255 MORNING FOG** (LIGHT ACCENT)
- I. **SW6256 SERIOUS GRAY** (DARK ACCENT)
- J. **SW6719 GECKO** (BRIGHT ACCENT)

WALL BASE 4"



PAINT (SHERWIN WILLIAMS INT/EXT)



November 2020

City Lights | Kindred

City Lights Kindred

Optional Upgrade 1

Color Scheme 2



November 2020

City Lights | Kindred

LVT: GRAIN 0502V | ASHEN 64155 **CARPET TILE:** DREAM 5T266 | NESTLE 48760 **INSERT:** MEMORY 5T263 | NESTLE 48760

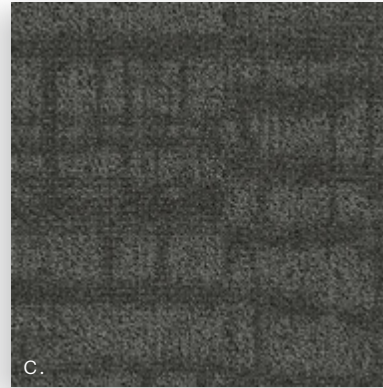
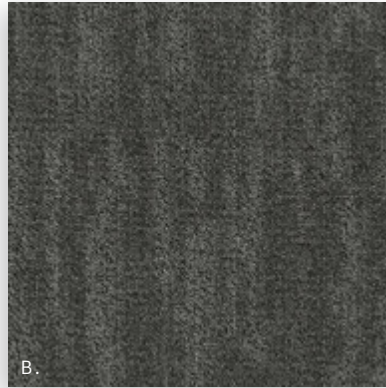
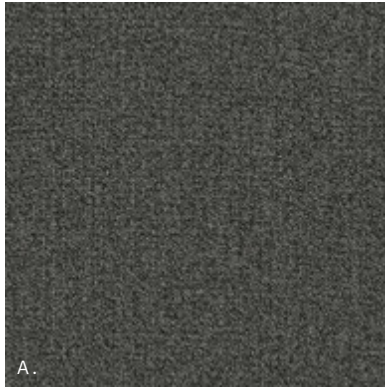
City Lights

Kindred

Optional Upgrade 1

Color Scheme 2

CARPET TILE 24" X 24" ADD \$.39 / SQ FT



LVT 7" X 48"

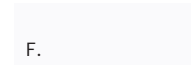


LVT 24" X 24"



- A. **BELONG 5T261** | NESTLE 48760
- B. **DREAM 5T265** | NESTLE 48760
- C. **MEMORY 5T263** | NESTLE 48760
- D. **GRAIN 0502V** | ASHEN 64155
- E. **COMPOUND 2.5MM 4074V** | BASE 77504
- F. **4" WALL BASE 148VS** | WHITE 00100
- G. **SW7757 HR WHITE** (PRIMARY)
- H. **SW6072 VERSATILE GRAY** (LIGHT ACCENT)
- I. **SW6074 SPALDING GRAY** (DARK ACCENT)
- J. **SW6615 RED/ORANGE** (BRIGHT ACCENT)

WALL BASE 4"



PAINT (SHERWIN WILLIAMS INT/EXT)



November 2020

City Lights | Kindred

City Lights Kindred

Optional Upgrade 1

Color Scheme 3



November 2020

City Lights | Kindred

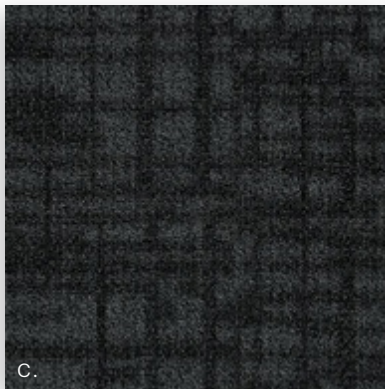
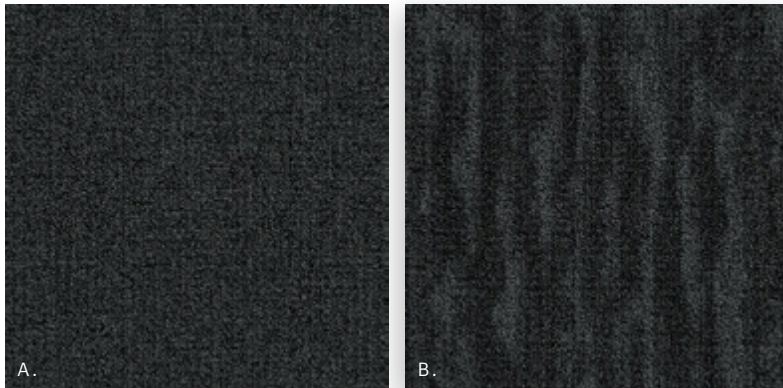
LVT: GRAIN 0502V | WEATHERED 64518 **CARPET TILE:** BELONG 5T261 | BLANKET 48505 **INSERT:** BELONG 5T261 | FIRE 48856

City Lights Kindred

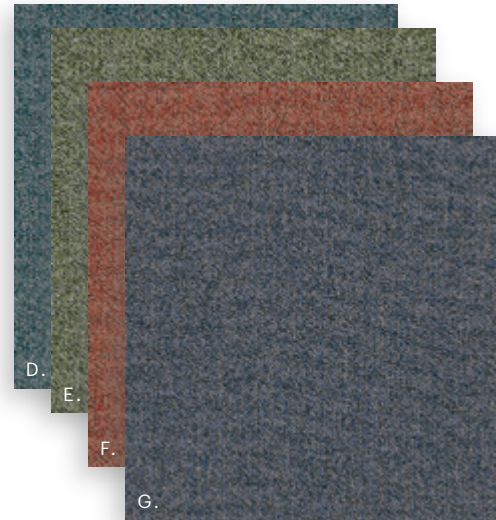
Optional Upgrade 1

Color Scheme 3

CARPET TILE 24" X 24" ADD \$.39 / SQ FT



ACCENT CARPET TILE 24" X 24"



LVT 24" X 24"



LVT 7" X 48"



- A. **BELONG 5T261** | BLANKET 48505
- B. **DREAM 5T265** | BLANKET 48505
- C. **MEMORY 5T263** | BLANKET 48505
- D. **BELONG 5T261** | COMFORT 48323
- E. **BELONG 5T261** | GREENERY 48370
- F. **BELONG 5T261** | FIRE 48856
- G. **BELONG 5T261** | SERENE 48486
- H. **GRAIN 0502V** | WEATHERED 64518
- I. **COMPOUND 2.5MM 4074V** | ELEVATE 77518
- J. **4" WALL BASE 148VS** | STERLING 00120
- K. **SW6259 SPATIAL WHITE** (PRIMARY)
- L. **SW6232 MISTY** (LIGHT ACCENT)
- M. **SW7074 SOFTWARE** (DARK ACCENT)
- N. **SW6775 BRINY** (BRIGHT ACCENT)
- O. **SW6510 LOYAL BLUE** (BRIGHT ACCENT)

WALL BASE 4"



PAINT (SHERWIN WILLIAMS INT/EXT)



November 2020

City Lights | Kindred

City Lights

Material Matters

Optional Upgrade 1

Color Scheme 1



November 2020

City Lights | Material Matters

LVT: TERRAIN II 20 MIL 0454V | ECHO 00775 CARPET TILE: WANDER 5T039 | AIRY 37530

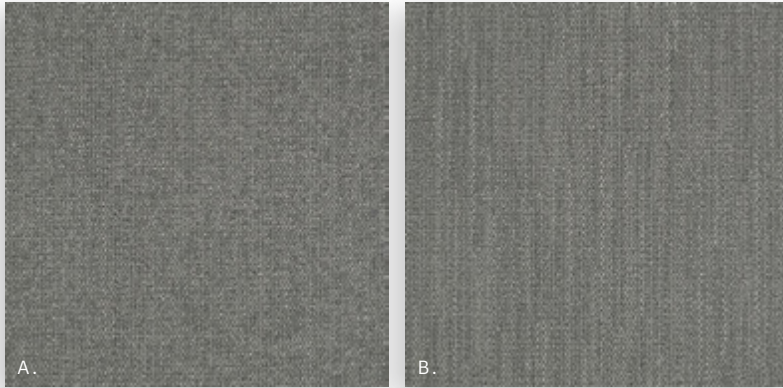
City Lights

Material Matters

Optional Upgrade 1

Color Scheme 1

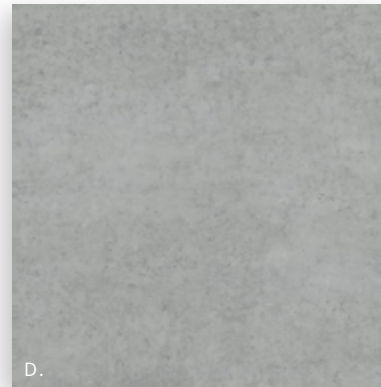
CARPET TILE 24" X 24" ADD \$.44 / SQ FT



LVT 6" X 48"



LVT 24" X 24"



- A. **WANDER 5T039** | AIRY 37530
- B. **EMBARK 5T040** | AIRY 37530
- C. **TERRAIN II 20 MIL 0454V** | ECHO 00775
- D. **COMPOUND 2.5MM** | THRESHOLD 77515
- E. **4" WALL BASE 148VS** | STERLING 00120
- F. **SW6259 SPATIAL WHITE** (PRIMARY)
- G. **SW6255 MORNING FOG** (LIGHT ACCENT)
- H. **SW6256 SERIOUS GRAY** (DARK ACCENT)

WALL BASE 4"



PAINT (SHERWIN WILLIAMS INT/EXT)



November 2020

City Lights | Material Matters

City Lights

Material Matters

Optional Upgrade 1

Color Scheme 2



November 2020

City Lights | Material Matters

LVT: COMPOUND 2.5MM 4074V | CHISEL 77520 **CARPET TILE:** EMBARK 5T040 | DELICATE 37515

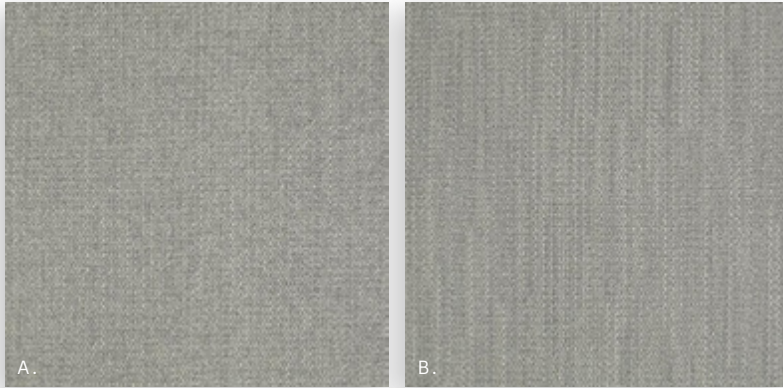
City Lights

Material Matters

Optional Upgrade 1

Color Scheme 2

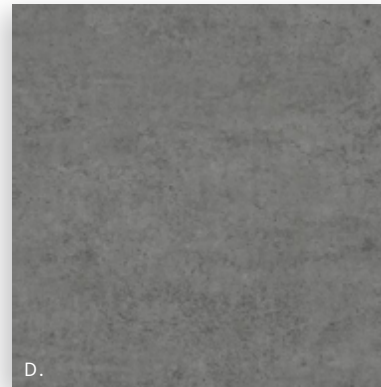
CARPET TILE 24" X 24" ADD \$.44 / SQ FT



LVT 6" X 48"

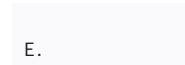


LVT 24" X 24"



- A. **WANDER 5T039** | DELICATE 37515
- B. **EMBARK 5T040** | DELICATE 37515
- C. **TERRAIN II 20 MIL 0454V** | TIMBER 00572
- D. **COMPOUND 2.5MM** | CHISEL 77520
- E. **4" WALL BASE 148VS** | WHITE 00100
- F. **SW7757 HR WHITE** (PRIMARY)
- G. **SW6072 VERSATILE GRAY** (LIGHT ACCENT)
- H. **SW6074 SPALDING GRAY** (DARK ACCENT)

WALL BASE 4"



PAINT (SHERWIN WILLIAMS INT/EXT)



November 2020

City Lights | Material Matters

City Lights

Material Matters

Optional Upgrade 1

Color Scheme 3



November 2020

City Lights | Material Matters

LVT: TERRAIN II 20 MIL 0454V | SHADE 00564 **CARPET TILE:** WANDER 5T039 | SMOKE 37577

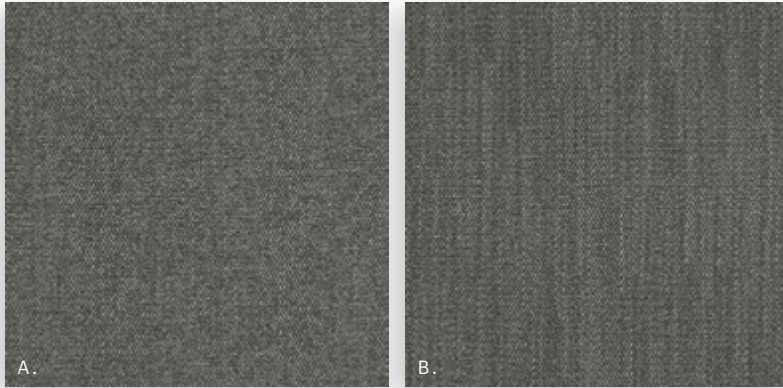
City Lights

Material Matters

Optional Upgrade 1

Color Scheme 3

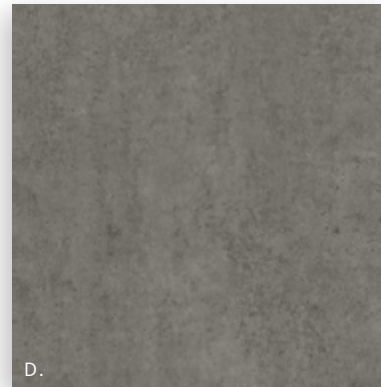
CARPET TILE 24" X 24" ADD \$.44 / SQ FT



LVT 6" X 48"



LVT 24" X 24"



- A. **WANDER 5T039** | SMOKE 37577
- B. **EMBARK 5T040** | SMOKE 37577
- C. **TERRAIN II 20 MIL 0454V** | SHADE 00564
- D. **COMPOUND 2.5MM** | FOUNDATION 77530
- E. **4" WALL BASE 148VS** | STERLING 00120
- F. **SW6259 SPATIAL WHITE** (PRIMARY)
- G. **SW6232 MISTY** (LIGHT ACCENT)
- H. **SW7074 SOFTWARE** (DARK ACCENT)

WALL BASE 4"



PAINT (SHERWIN WILLIAMS INT/EXT)



November 2020

City Lights | Material Matters

City Lights

Material Matters

Optional Upgrade 1

Color Scheme 4



November 2020

City Lights | Material Matters

LVT: COMPOUND 2.5MM 4074V | ELEVATE 77518 **CARPET TILE:** EMBARK 5T040 | MYTH 37505 **INSERT:** WANDER 5T039 | MYTH 37505, AIRY 37530, DELICATE 37515, SMOKE 37557

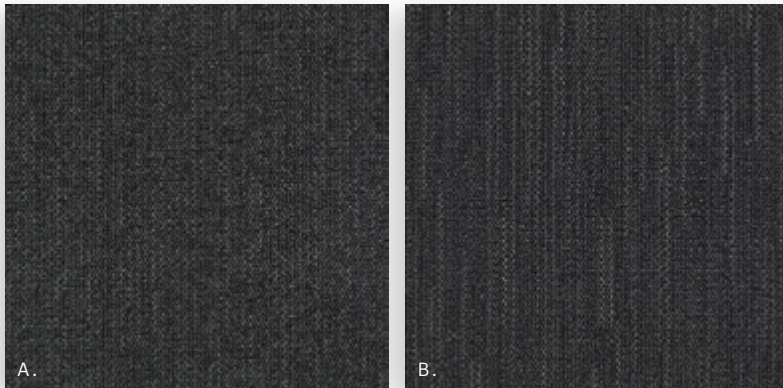
City Lights

Material Matters

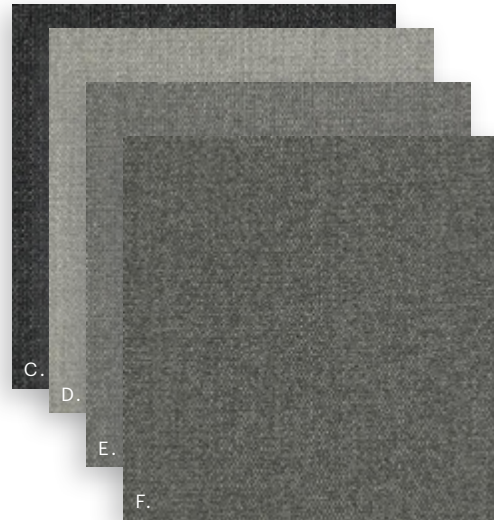
Optional Upgrade 1

Color Scheme 4

CARPET TILE 24" X 24" ADD \$.44 / SQ FT



ACCENT CARPET TILE 24" X 24"

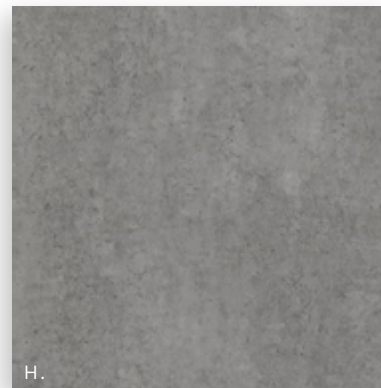


- A. **WANDER 5T039** | MYTH 37505
- B. **EMBARK 5T040** | MYTH 37505
- C. **WANDER 5T039** | MYTH 37505
- D. **WANDER 5T039** | DELICATE 37515
- E. **WANDER 5T039** | AIRY 37530
- F. **WANDER 5T039** | SMOKE 37577
- G. **TERRAIN II 20 MIL 0454V** | LARK 05016
- H. **COMPOUND 2.5MM 4074V** | ELEVATE 77518
- I. **4" WALL BASE 148VS** | STERLING 00120
- J. **SW6259 SPATIAL WHITE** (PRIMARY)
- K. **SW6232 MISTY** (LIGHT ACCENT)
- L. **SW7074 SOFTWARE** (DARK ACCENT)

LVT 6" X 48"



LVT 24" X 24"



WALL BASE 4"



PAINT (SHERWIN WILLIAMS INT/EXT)



November 2020

City Lights | Material Matters

Ocean View Creating Space

Optional Upgrade 2

Color Scheme 1



November 2020

Ocean View | Creating Space

LVT: SOUNDSCAPE 4063V | FEATHER 63155 CARPET TILE: AWARE ECOWORX 5T358 | ASH 58535 INSERT: CONSCIOUS ECOWORX 5T359 | ASH 58535

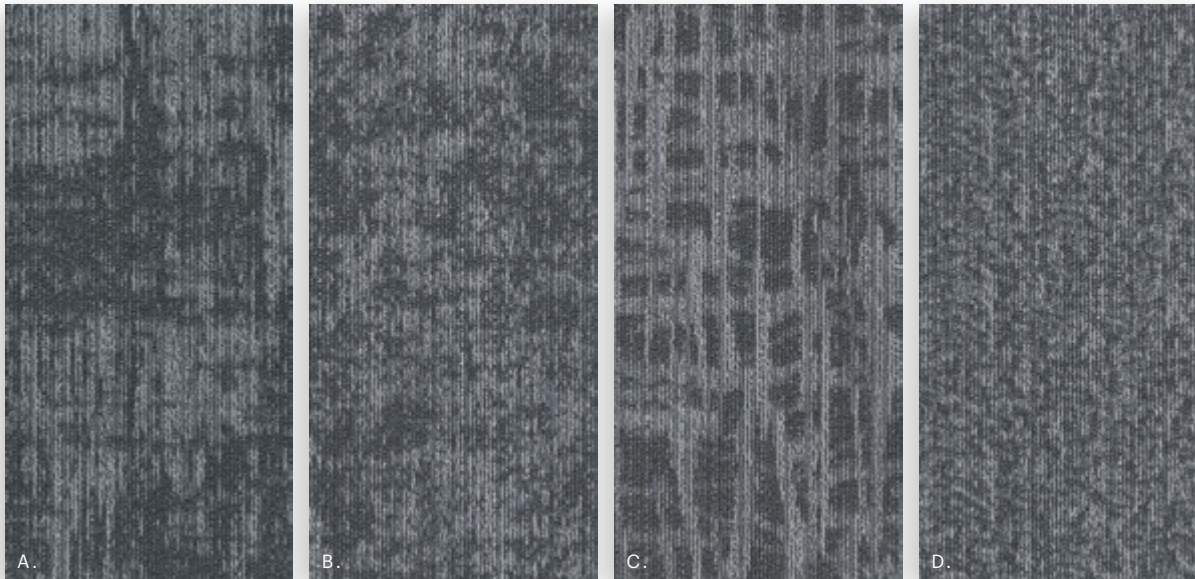
Ocean View

Creating Space

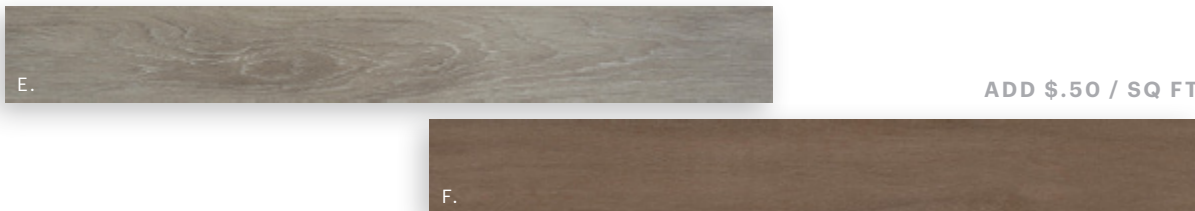
Optional Upgrade 2

Color Scheme 1

CARPET TILE 18" X 36" ADD \$.66 / SQ FT



LVT 6" X 48" ADD \$.20 / SQ FT



- A. **AWARE ECOWORX 5T358** | ASH 58535
- B. **CONSCIOUS ECOWORX 5T359** | ASH 58535
- C. **INTENTION ECOWORX 5T360** | ASH 58535
- D. **PRESENT ECOWORX 5T361** | ASH 58535
- E. **SOLITUDE 0648V** | SMOKE 48506
- F. **SOUNDSCAPE 4063V** | FEATHER 63155
- G. **4" WALL BASE 148VS** | STERLING 00120
- H. **SW6259 SPATIAL WHITE** (PRIMARY)
- I. **SW6255 MORNING FOG** (LIGHT ACCENT)
- J. **SW6256 SERIOUS GRAY** (DARK ACCENT)

WALL BASE 4"



PAINT (SHERWIN WILLIAMS INT/EXT)



November 2020

Ocean View | Creating Space

Ocean View Creating Space

Optional Upgrade 2

Color Scheme 2



November 2020

Ocean View | Creating Space

LVT: SOLITUDE 0648V | COTTONWOOD 48120 **CARPET TILE:** CONSCIOUS ECOWORX 5T359 | GLAZE 58761 **INSERT:** PRESENT ECOWORX 5T361 | GLAZE 58761

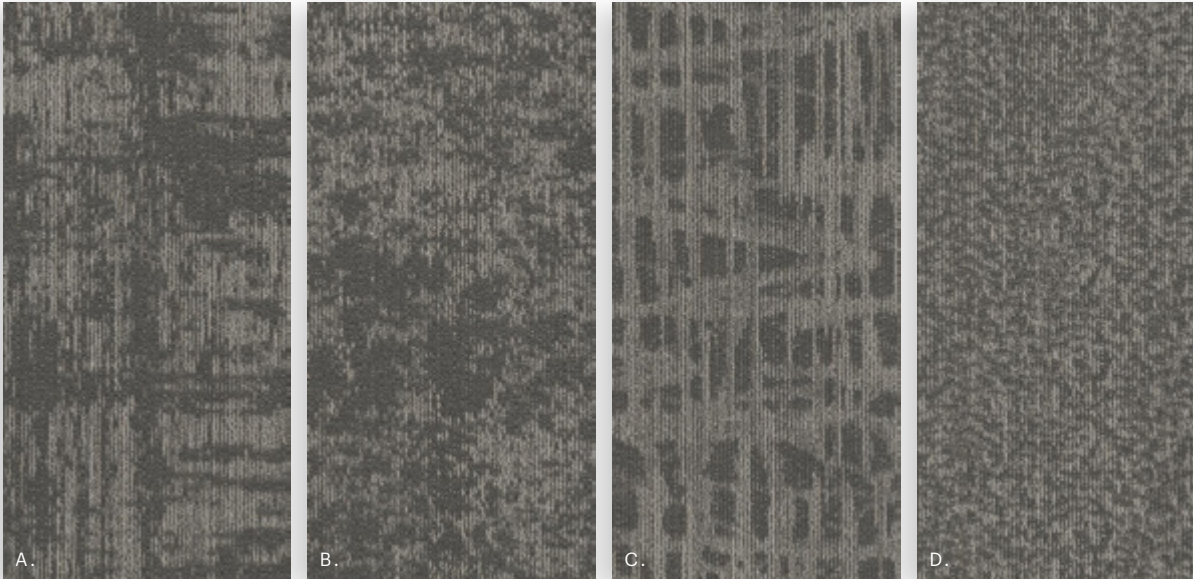
Ocean View

Creating Space

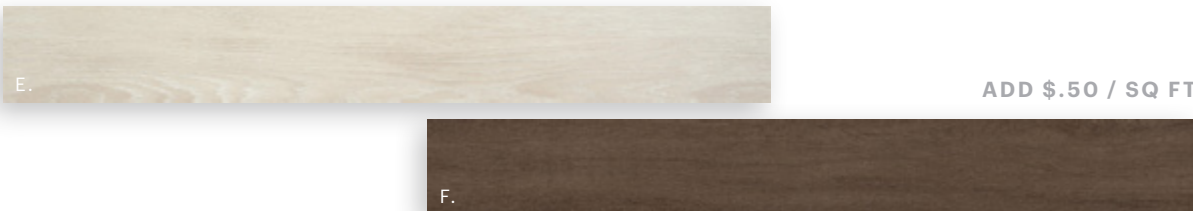
Optional Upgrade 2

Color Scheme 2

CARPET TILE 18" X 36" ADD \$.66 / SQ FT

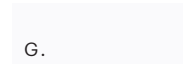


LVT 6" X 48" ADD \$.20 / SQ FT

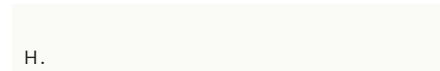


- A. **AWARE ECOWORX 5T358** | GLAZE 58761
- B. **CONSCIOUS ECOWORX 5T359** | GLAZE 58761
- C. **INTENTION ECOWORX 5T360** | GLAZE 58761
- D. **PRESENT ECOWORX 5T361** | GLAZE 58761
- E. **SOLITUDE 0648V** | COTTONWOOD 48120
- F. **SOUNDSCAPE 4063V** | CINDER 63760
- G. **4" WALL BASE 148VS** | WHITE 00100
- H. **SW7757 HR WHITE** (PRIMARY)
- I. **SW6072 VERSATILE GRAY** (LIGHT ACCENT)
- J. **SW6074 SPALDING GRAY** (DARK ACCENT)

WALL BASE 4"



PAINT (SHERWIN WILLIAMS INT/EXT)



November 2020

Ocean View | Creating Space

Ocean View Creating Space

Optional Upgrade 2

Color Scheme 3



November 2020

Ocean View | Creating Space

LVT: SOUNDSCAPE 4063V | INK 63549 **CARPET TILE:** PRESENT ECOWORX 5T361 | INK 58505 **INSERT:** INTENTION ECOWORX 5T360 | INK 58505

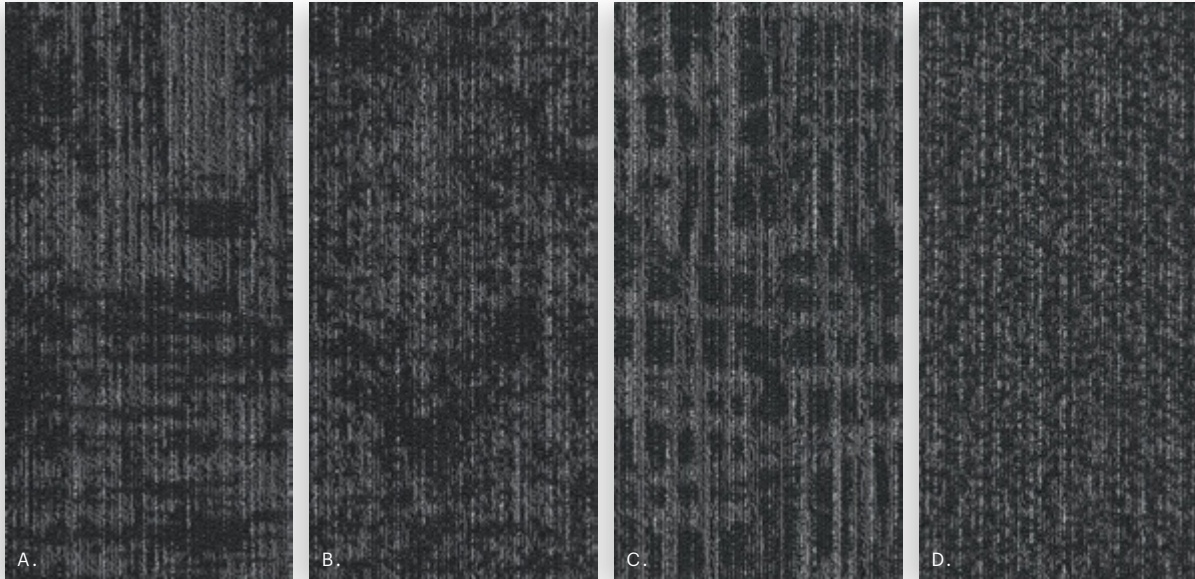
Ocean View

Creating Space

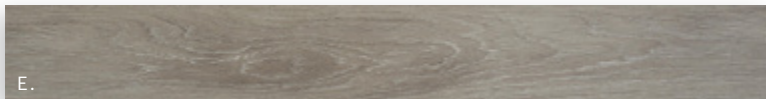
Optional Upgrade 2

Color Scheme 3

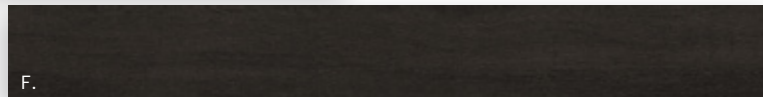
CARPET TILE 18" X 36" ADD \$.66 / SQ FT



LVT 6" X 48" ADD \$.20 / SQ FT



ADD \$.50 / SQ FT



- A. **AWARE ECOWORX 5T358** | INK 58505
- B. **CONSCIOUS ECOWORX 5T359** | INK 58505
- C. **INTENTION ECOWORX 5T360** | INK 58505
- D. **PRESENT ECOWORX 5T361** | INK 58505
- E. **SOLITUDE 0648V** | SMOKE 48506
- F. **SOUNDSCAPE 4063V** | INK 63549
- G. **4" WALL BASE 148VS** | STERLING 00120
- H. **SW6259 SPATIAL WHITE** (PRIMARY)
- I. **SW6232 MISTY** (LIGHT ACCENT)
- J. **SW7074 SOFTWARE** (DARK ACCENT)

WALL BASE 4"



PAINT (SHERWIN WILLIAMS INT/EXT)



November 2020

Ocean View | Creating Space

Ocean View Community

Optional Upgrade 2

Color Scheme 1



November 2020

Ocean View | Community

LVT: INCLUSIVE 4068V | MOREL 68540 **CARPET TILE:** FLATWEAVE 5T321 | WOOL 01105 **INSERT:** HEDDLE 5T320 | WOOL 01105

Ocean View Community

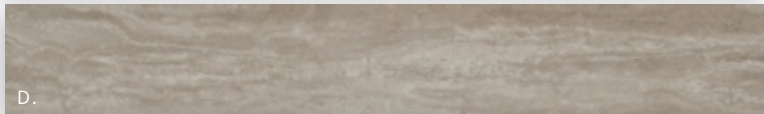
Optional Upgrade 2

Color Scheme 1

CARPET TILE 9" X 36" ADD \$1.00 / SQ FT

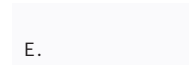


LVT 7" X 48" ADD \$.50 / SQ FT

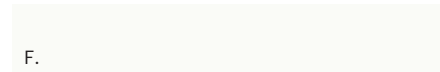


- A. **HEDDLE 5T320** | WOOL 01105
- B. **FLATWEAVE 5T321** | WOOL 01105
- C. **INCLUSIVE 4068V** | MOREL 68540
- D. **EXPRESSION 4069V** | SAND 69115
- E. **4" WALL BASE 148VS** | WHITE 00100
- F. **SW7757 HR WHITE** (PRIMARY)
- G. **SW6255 MORNING FOG** (LIGHT ACCENT)
- H. **SW6256 SERIOUS GRAY** (DARK ACCENT)

WALL BASE 4"



PAINT (SHERWIN WILLIAMS INT/EXT)



November 2020

Ocean View | Community

Ocean View Community

Optional Upgrade 2

Color Scheme 2



November 2020

Ocean View | Community

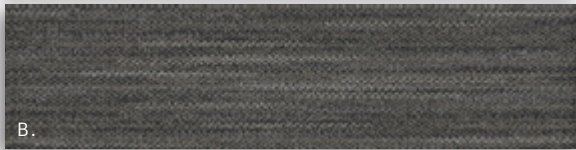
LVT: EXPRESSION 4069V | CLAY 69504 **CARPET TILE:** HEDDLE 5T320 | BLENDED 01555 **INSERT:** FLATWEAVE 5T321 | BLENDED 01555

Ocean View Community

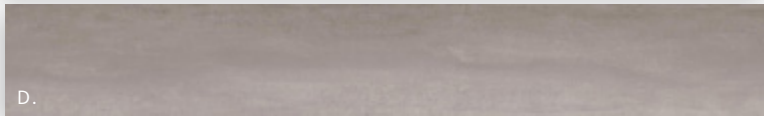
Optional Upgrade 2

Color Scheme 2

CARPET TILE 9" X 36" ADD \$1.00 / SQ FT

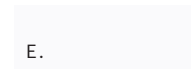


LVT 7" X 48" ADD \$.50 / SQ FT

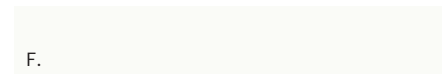


- A. **HEDDLE 5T320** | BLENDED 01555
- B. **FLATWEAVE 5T321** | BLENDED 01555
- C. **INCLUSIVE 4068V** | MOONLIT 68120
- D. **EXPRESSION 4069V** | CLAY 69504
- E. **4" WALL BASE 148VS** | WHITE 00100
- F. **SW7757 HR WHITE** (PRIMARY)
- G. **SW6072 VERSATILE GRAY** (LIGHT ACCENT)
- H. **SW6074 SPALDING GRAY** (DARK ACCENT)

WALL BASE 4"



PAINT (SHERWIN WILLIAMS INT/EXT)



November 2020

Ocean View | Community

Ocean View Community

Optional Upgrade 2

Color Scheme 3



November 2020

Ocean View | Community

LVT: INCLUSIVE 4068V | INDUSTRIAL 68599 **CARPET TILE:** FLATWEAVE 5T321 | HENNA 01585 **RUG:** EMBRACE RUG (5A259) | HIGH ATLAS 01100

Ocean View Community

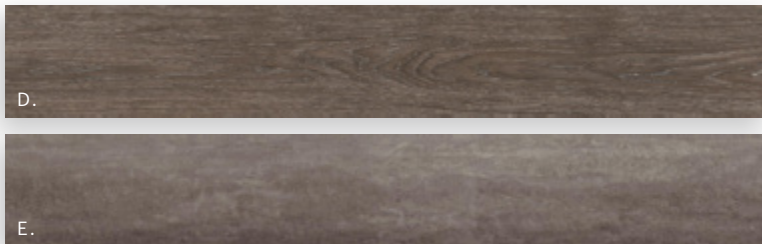
Optional Upgrade 2

Color Scheme 3

CARPET TILE 9" X 36" ADD \$1.00 / SQ FT



LVT 7" X 48" ADD \$.50 / SQ FT

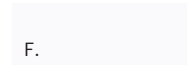


RUG * REQUEST PRICE

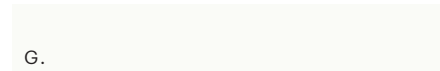


- A. **HEDDLE 5T320** | HENNA 01585
- B. **FLATWEAVE 5T321** | HENNA 01585
- C. **EMBRACE RUG (5A259)** | HIGH ATLAS 01100
- D. **INCLUSIVE 4068V** | INDUSTRIAL 68599
- E. **EXPRESSION 4069V** | BEDROCK 69530
- F. **4" WALL BASE 148VS** | WHITE 00100
- G. **SW7757 HR WHITE** (PRIMARY)
- H. **SW6232 MISTY** (LIGHT ACCENT)
- I. **SW7074 SOFTWARE** (DARK ACCENT)

WALL BASE 4"



PAINT (SHERWIN WILLIAMS INT/EXT)



November 2020

Ocean View | Community

Ocean View Community

Optional Upgrade 2

Color Scheme 4



November 2020

Ocean View | Community

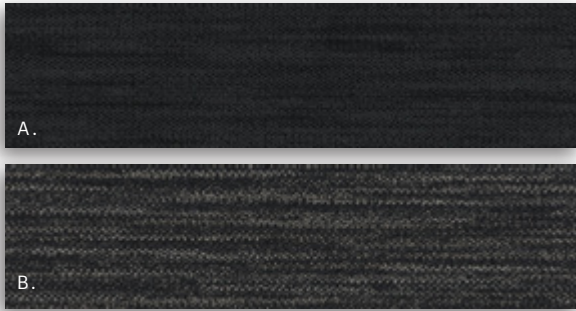
LVT: EXPRESSION 4069V | MINERAL 69518 **CARPET TILE:** HEDDLE 5T320 | SOUKE 01500 **RUG:** ATLAS RUG (5A267) | EMPATHY 67100

Ocean View Community

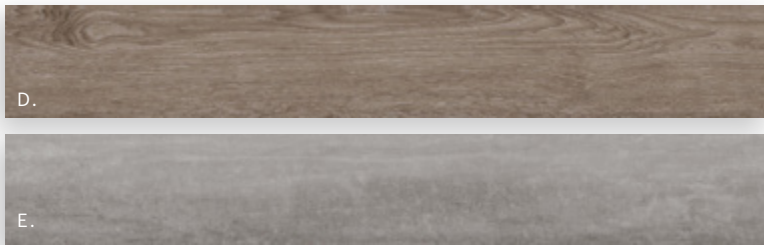
Optional Upgrade 2

Color Scheme 4

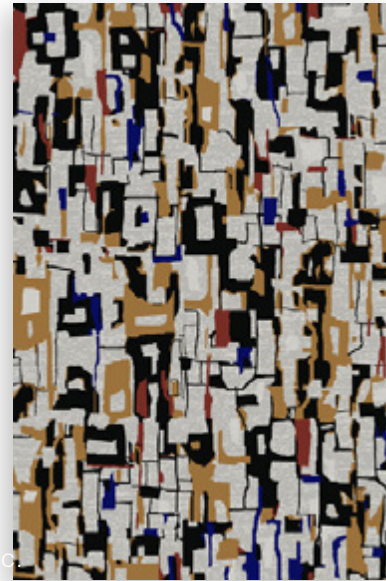
CARPET TILE 9" X 36" ADD \$1.00 / SQ FT



LVT 7" X 48" ADD \$.50 / SQ FT

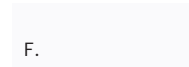


RUG * REQUEST PRICE

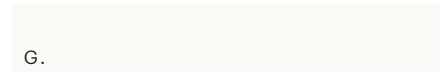


- A. **HEDDLE 5T320** | SOUKE 01500
- B. **FLATWEAVE 5T321** | SOUKE 01500
- C. **ATLAS RUG (5A267)** | EMPATHY 67100
- D. **INCLUSIVE 4068V** | GUNMETAL 68516
- E. **EXPRESSION 4069V** | MINERAL 69518
- F. **4" WALL BASE 148VS** | WHITE 00100
- G. **SW7757 HR WHITE** (PRIMARY)
- H. **SW6255 MORNING FOG** (LIGHT ACCENT)
- I. **SW6256 SERIOUS GRAY** (DARK ACCENT)

WALL BASE 4"



PAINT (SHERWIN WILLIAMS INT/EXT)



November 2020

Ocean View | Community

Contacts:

Kimberly Johnson
Account Manager
kimberly.johnson@shawcontract.com
+1 310.991.8010

Maggie Beitler
Vice President, Strategic Accounts
maggie.beitler@shawinc.com
+1 415.590.0627